



DMS 3503B Digital Media Streamer

Applications

- Digital Signage
- Retail
- Product Design
- Testing
- Tradeshows

The DMS 3503B can be configured with up to 5 Input/Output modules in any combination:

- **ASI/IP I/O Module:** (3) Bi-directional ASI Ports
(1) Gig Ethernet Port
- **QAM Modulator:** QAM A/B/C
- **Universal Modulator:** 8-VSB, DVB-T/H, QAM A/B/C
- **Satellite Modulator:** DVB-S/S2
- **ASI I/O Module:** (1) ASI Input (1) ASI Output
- **ASI Input Module:** (4) ASI Input

DMS 3503B Digital Media Streamer

The DMS 3503B is the latest addition to Sencore's family of MPEG streamers. The DMS 3503B will take any MPEG-2 or H.264 compliant transport stream and stream it out via a variety of output choices. Since the introduction of Digital Television, Sencore has provided retailers, manufacturers, laboratories, and product designers with professional MPEG Transport Stream players and streamers for digital signage, retail TV-wall, product testing and tradeshow applications.

The DMS 3503B can be configured with a variety input and output modules including:

- ASI
- QAM A/B/C
- GigE
- 8-VSB
- DVB-S/S2
- DVB-T/H

Full control of the DMS 3503B is accessible either from the front panel or remotely through the web interface. SNMP Traps, Event Logging and Error Indicators are available for complete management of the streamer.

Key Features

- Easy to use Web interface
- Robust and easily configurable
- Customization of files through playlists
- Bench-top or Rack-mountable
- Embedded Operating System for high reliability
- Large storage capacity for long stream playback

DMS 3503B Digital Media Streamer

Specifications

System

Processor:	3.0 GHz Dual Core
RAM:	2 GB
USB Connectors:	5
Rear Panel:	5 available PCI slots 2 PCI-X slots
Front Expansion Bays:	2
Default Bays:	DVD-ROM 12x & SATA Expansion Bay

Remote

Operation/Update Interface Type:	Ethernet, 10/100/1000
Rear panel indicators:	Link (Green for 10/100, Red for 1000), Activity (Amber LED Blinking)
Connector:	RJ45

Power

Operating Voltage:	100-135 VAC or 185-265 VAC
Supply:	510 Watt
Current:	4-8 Amps
Frequency:	47-63 Hz
Line Cord:	Detachable, 3-prong

Storage

Drive type:	SATA
Drive RPM:	10000
RAID Type:	RAID 0 (Default)
Total Size:	~280 GB

General

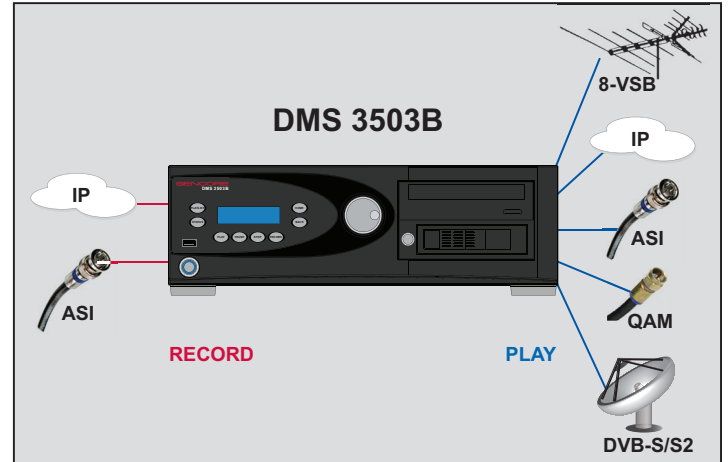
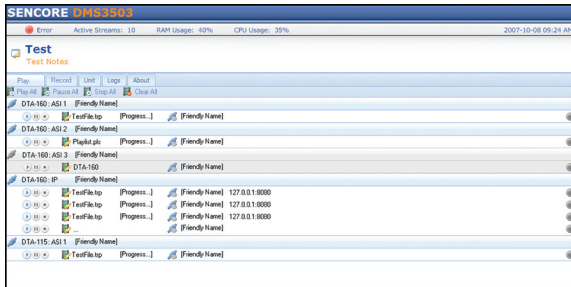
Operating Temperature:	10 to 35 degrees C
Operating Humidity:	<95% Non-Condensing
Cooling:	Forced air, front intake, rear exhaust
Pollution Degree:	2
Installation Category:	II

Size

Height:	5.25" (3U)
Width:	17"
Depth:	20"
Weight:	~23 lbs (No Modules)

Front Panel

Type:	Organic LED
Display Size (W x H):	256 pixels by 64 pixels
Keypad:	Snap-dome membrane



Since 1951, Sencore has provided our customers with innovative operational, signal monitoring and analysis, and video/audio distribution equipment. Sencore continuously works in close collaboration with our customers to provide solutions for the communications delivery challenges of today and tomorrow. All Sencore products are backed by unsurpassed customer support and responsiveness.